


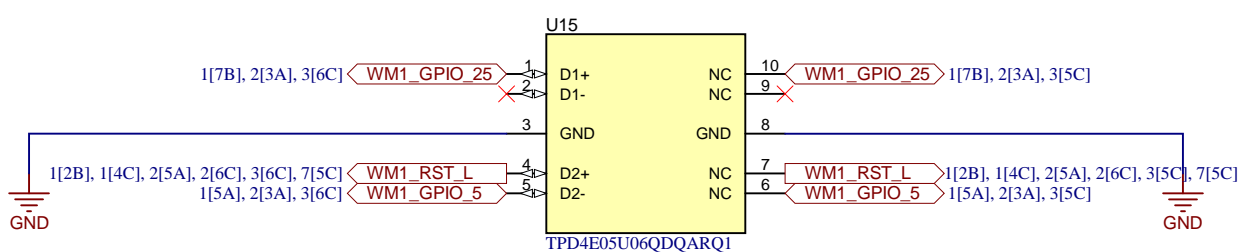
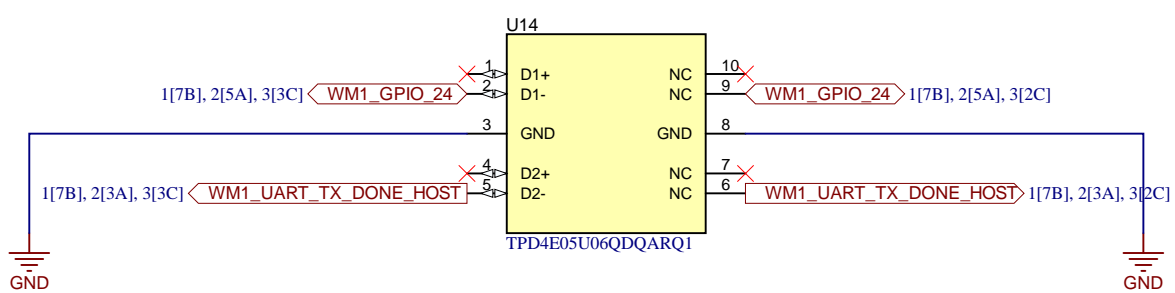
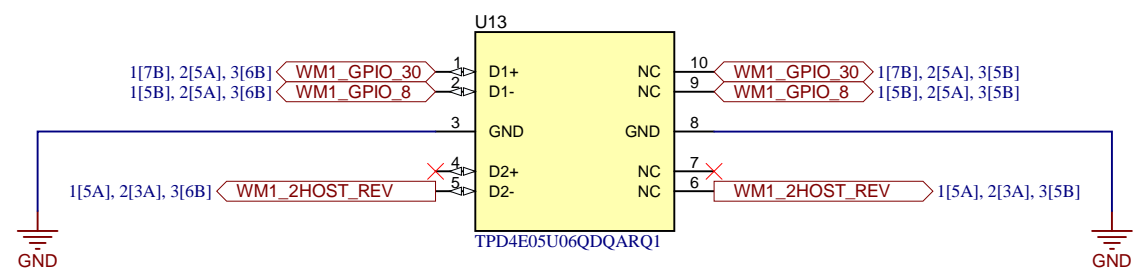
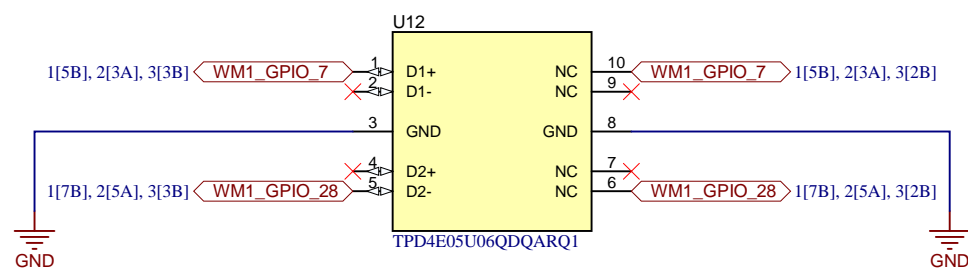
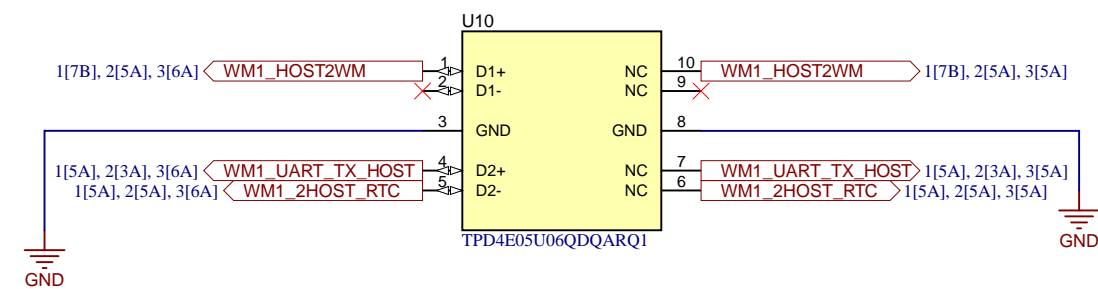
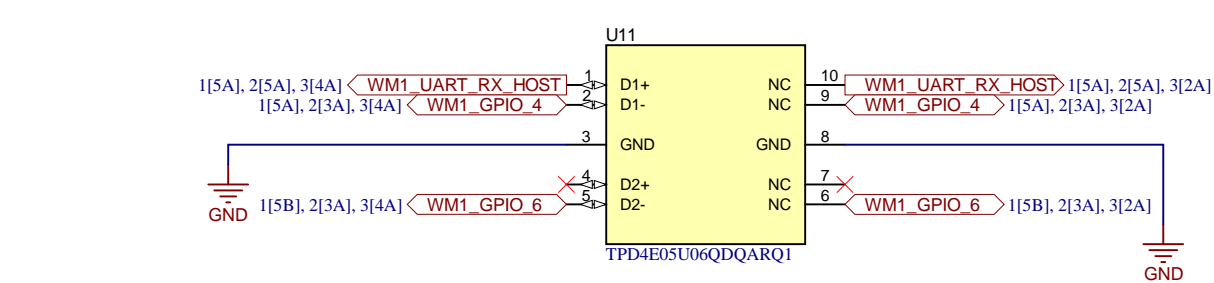
Wireless Main MCU #1

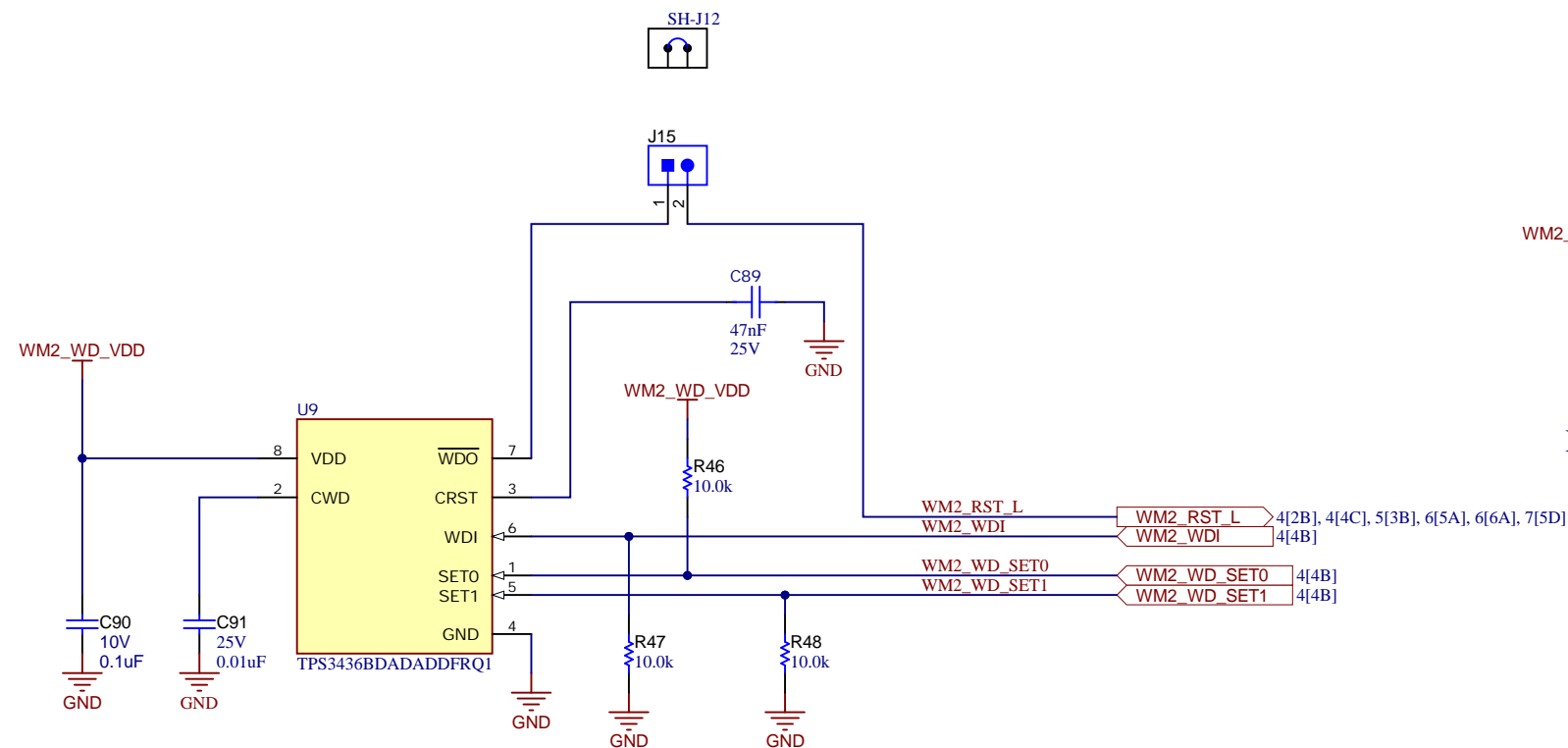
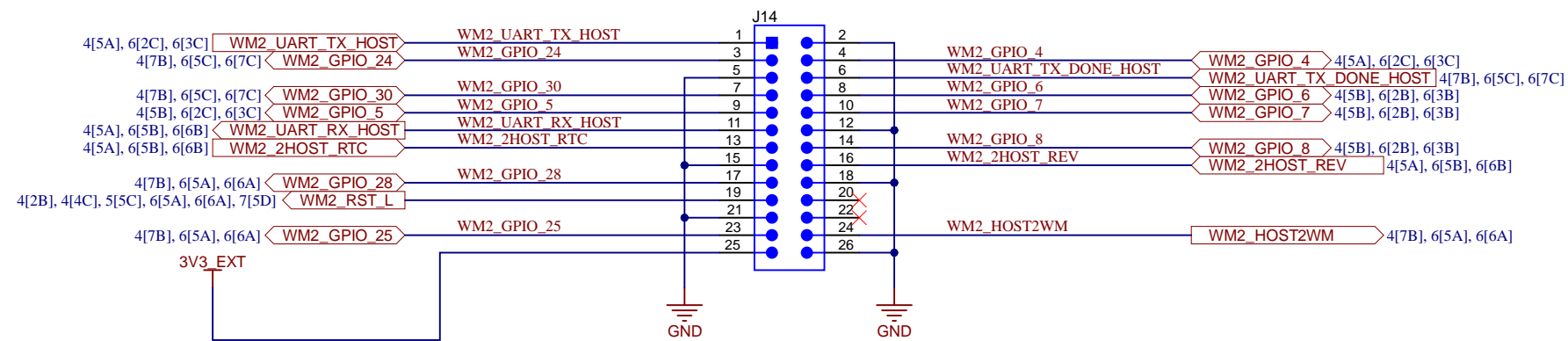
Texas Instruments and/or its licensors do not warrant the accuracy or completeness of this specification or any information contained therein. Texas Instruments and/or its licensors do not warrant that this design will meet the specifications, will be suitable for your application or fit for any particular purpose, or will operate in an implementation. Texas Instruments and/or its licensors do not warrant that the design is production worthy. You should completely validate and test your design implementation to confirm the system functionality for your application.

Orderable: CC2662RQ1-BCU-EVM	Designed for: Public Release	Mod. Date: 1/27/2026
TID #:	Project Title: WBMS BCU EVM	
Number: MCU122	Rev: A	
SVN Rev: Not in version control	Assembly Variant: 001	Sheet: 1 of 8
Drawn By: a0504388	File: MCU122A_WM1.SchDoc	Size: A3
Engineer: a0504388	Contact:	



http://www.ti.com
© Texas Instruments 2025



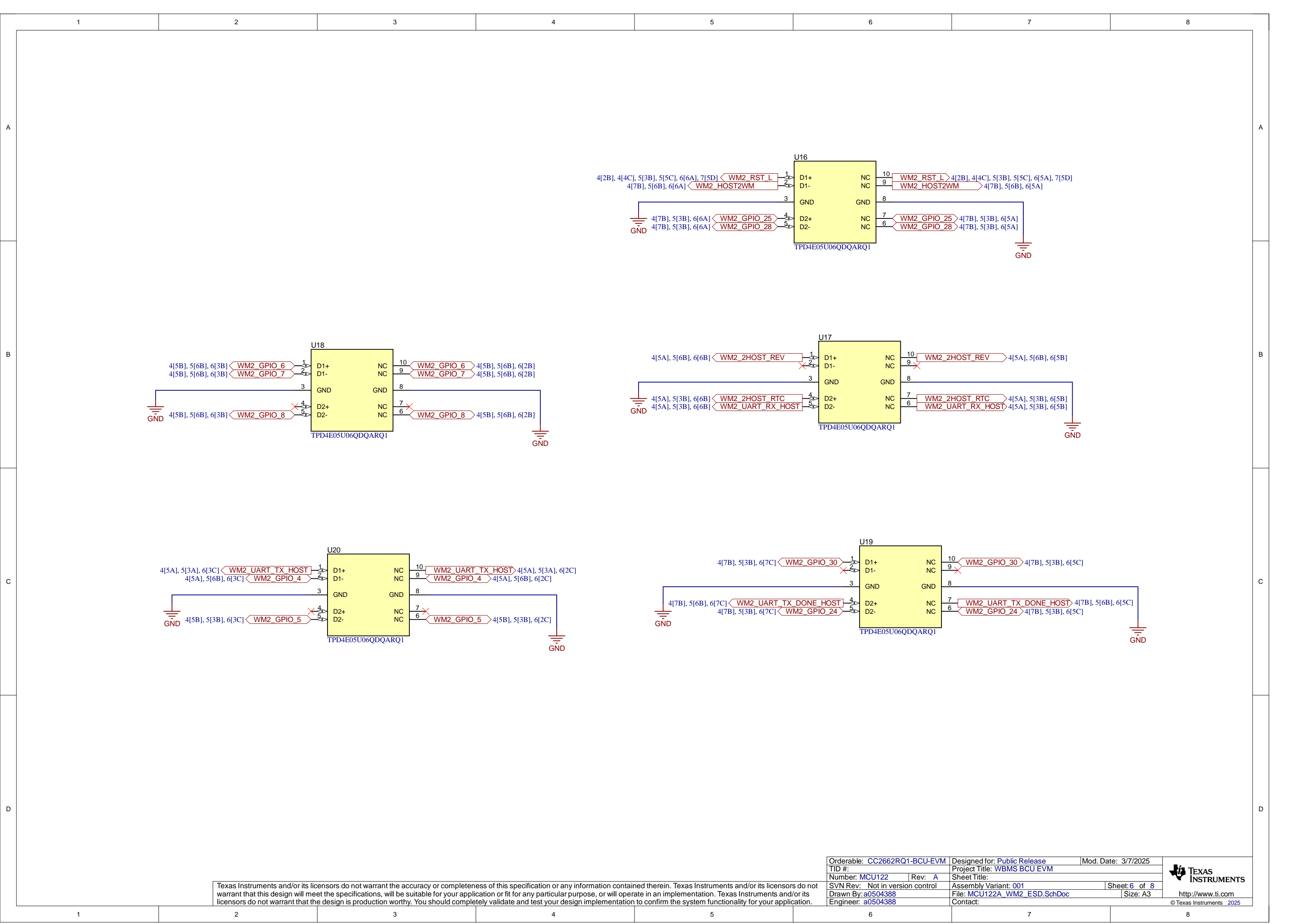


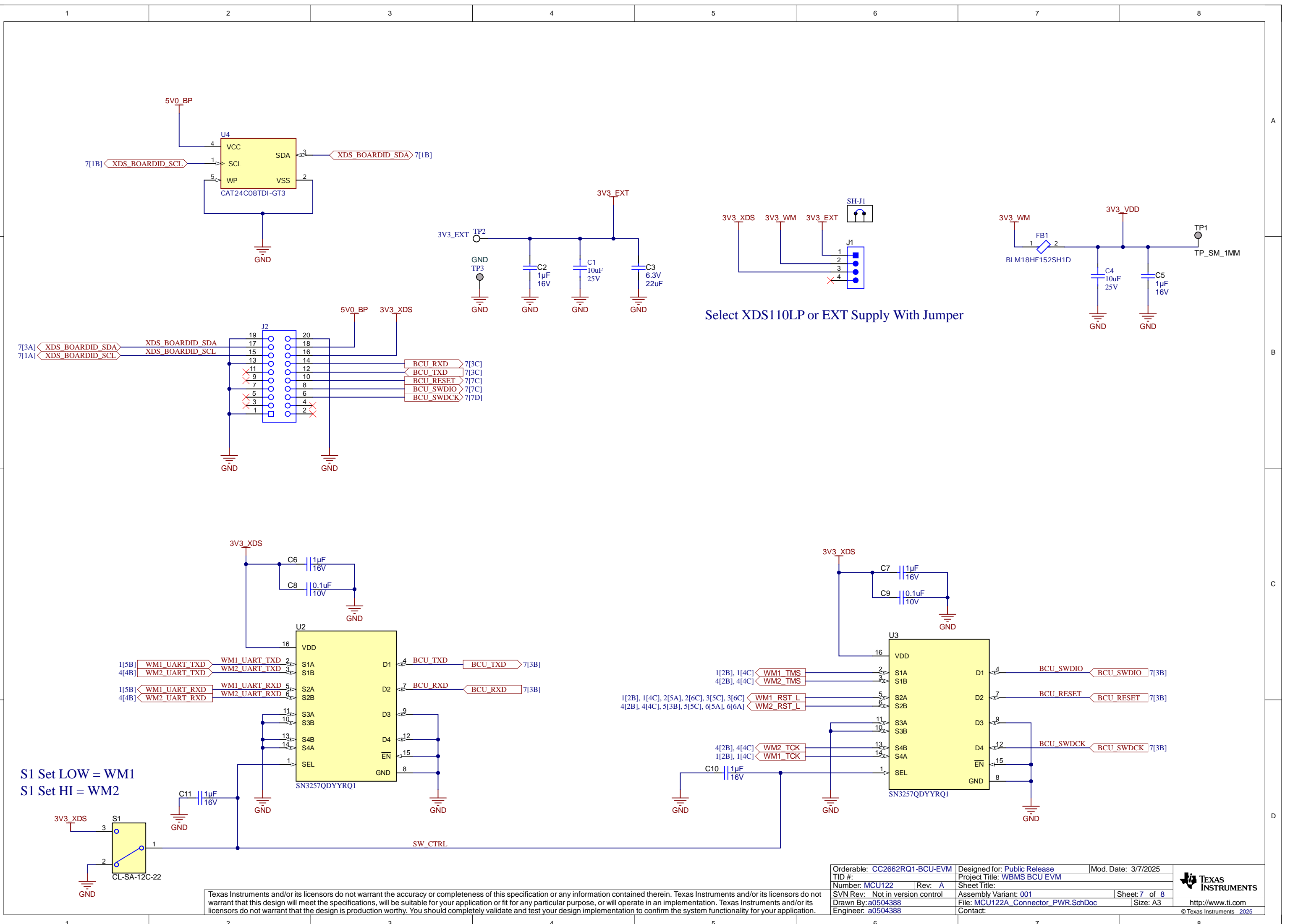
Power On or Off WD IC With Jumper

Wireless Main MCU #2 IO Header & WD

Texas Instruments and/or its licensors do not warrant the accuracy or completeness of this specification or any information contained therein. Texas Instruments and/or its licensors do not warrant that this design will meet the specifications, will be suitable for your application or fit for any particular purpose, or will operate in an implementation. Texas Instruments and/or its licensors do not warrant that the design is production worthy. You should completely validate and test your design implementation to confirm the system functionality for your application.

Orderable: CC2662RQ1-BCU-EVM	Designed for: Public Release	Mod. Date: 3/7/2025
TID #:	Project Title: WBMS BCU EVM	
Number: MCU122	Rev: A	Sheet Title:
SVN Rev: Not in version control	Assembly Variant: 001	Sheet: 5 of 8
Drawn By: a0504388	File: MCU122A_WM2_GPIO_Header.SchDoc	Size: A3
Engineer: a0504388	Contact:	



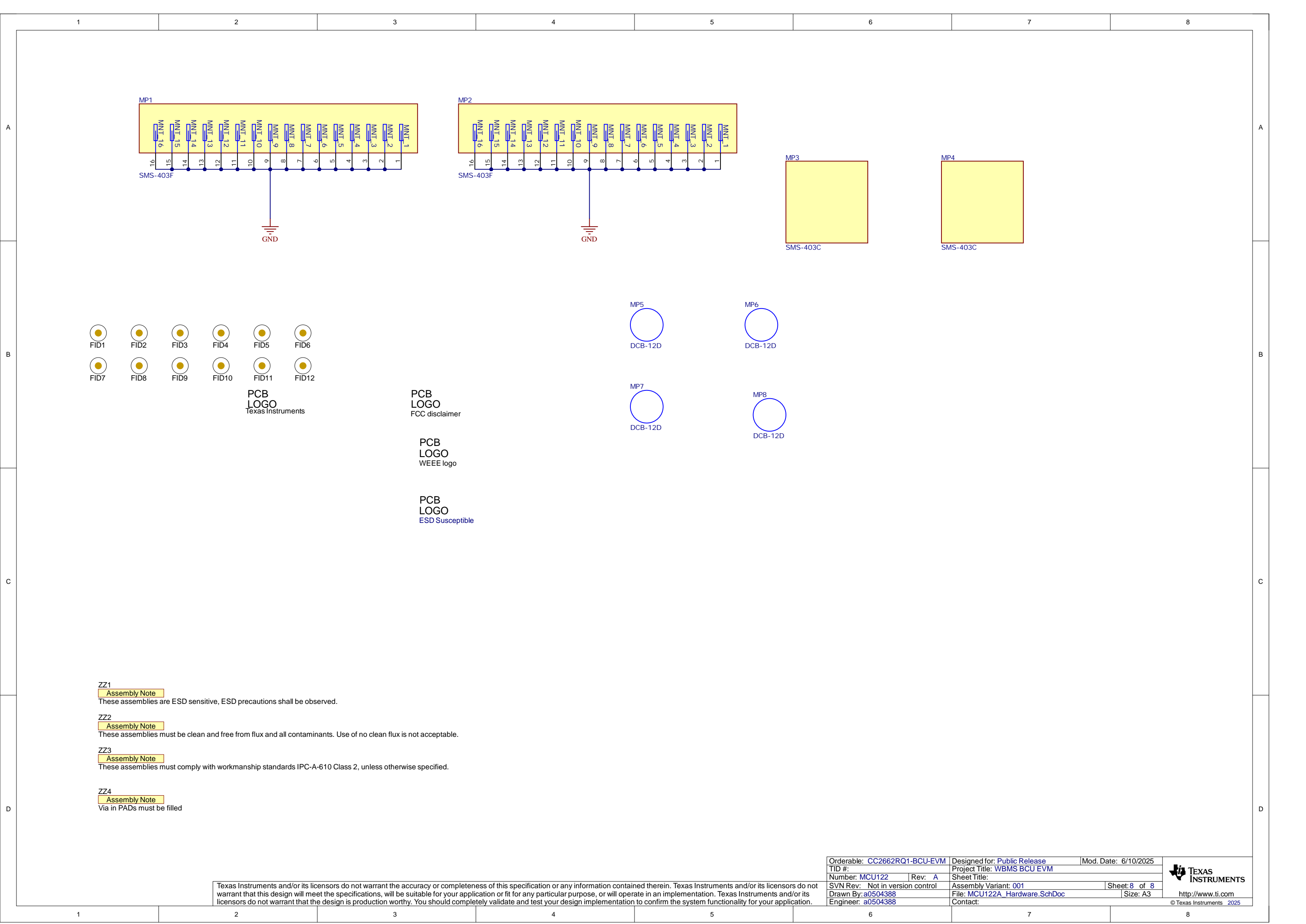


S1 Set LOW = WM1
S1 Set HI = WM2

Texas Instruments and/or its licensors do not warrant the accuracy or completeness of this specification or any information contained therein. Texas Instruments and/or its licensors do not warrant that this design will meet the specifications, will be suitable for your application or fit for any particular purpose, or will operate in an implementation. Texas Instruments and/or its licensors do not warrant that the design is production worthy. You should completely validate and test your design implementation to confirm the system functionality for your application.

Orderable: CC2662RQ1-BCU-EVM	Designed for: Public Release	Mod. Date: 3/7/2025
TID #:	Project Title: WBMS BCU EVM	
Number: MCU122	Rev: A	Sheet Title:
SVN Rev: Not in version control	Assembly Variant: 001	Sheet: 7 of 8
Drawn By: a0504388	File: MCU122A_Connector_PWR.SchDoc	Size: A3
Engineer: a0504388	Contact:	

© Texas Instruments 2025



ZZ1
Assembly Note
These assemblies are ESD sensitive, ESD precautions shall be observed.


ZZ2
Assembly Note
These assemblies must be clean and free from flux and all contaminants. Use of no clean flux is not acceptable.

ZZ3
Assembly Note
These assemblies must comply with workmanship standards IPC-A-610 Class 2, unless otherwise specified.

ZZ4
Assembly Note
Via in PADS must be filled

Texas Instruments and/or its licensors do not warrant the accuracy or completeness of this specification or any information contained therein. Texas Instruments and/or its licensors do not warrant that this design will meet the specifications, will be suitable for your application or fit for any particular purpose, or will operate in an implementation. Texas Instruments and/or its licensors do not warrant that the design is production worthy. You should completely validate and test your design implementation to confirm the system functionality for your application.

Orderable: CC2662RQ1-BCU-EVM		Designed for: Public Release		Mod. Date: 6/10/2025	
TID #:		Project Title: WBMS BCU EVM			
Number: MCU122		Rev: A		Sheet Title:	
SVN Rev: Not in version control		Assembly Variant: 001		Sheet: 8 of 8	
Drawn By: a0504388		File: MCU122A_Hardware.SchDoc		Size: A3	
Engineer: a0504388		Contact:			



http://www.ti.com
© Texas Instruments 2025